



SOFTWARE

software
Schnell
REINFORCEMENT PROCESSING SOLUTIONS

Index

■ Presentation	pag. 4
■ Products suite	pag. 5
 Graphico Pro	pag. 6
 ClicCad	pag. 9
 Grafo-Mesh	pag. 11
 Assistants	pag. 13
 Rebar Web	pag. 14
 Grafo-Plan	pag. 16
 Optimo	pag. 18
 Local Optimo	pag. 20
 Communication with machines	pag. 22
 Data Pro	pag. 24
 Grafo-Boss	pag. 25
 Grafo-Trax	pag. 27
 G-Stock	pag. 29
 ShippingBar	pag. 30
 Grafo-Gest	pag. 32
■ Integration with third parties	pag. 34

SCHNELL SOFTWARE'S PRESENTATION

Schnell Software S.L. started business activity in March 2001 with the aim of providing **specialized software for reinforcement steel industry**, a sector which was growing and where the technology is constantly evolving. Thenceforth it has focused on developing programs to **optimise reinforced concrete rebar processing**.

Schnell Software develops a CAD-CAM product that gives a solution to the organization and production of rebar industries, both small volume (SMEs) and big international steel industries. We are currently introduced in all the continents, with **more than 850 installations and over 4,500 software licenses**.

The company has a professional group of 20 people excited about their work who are divided among areas such as product development, CAD, electronics, communications, installations, administration and commercial area. We also have technology collaborators and people who are highly qualified in calculation systems.

The work of the company is also performed with the support of **Schnell Group**, a multinational group to

which it belongs, composed of 16 companies among machine production, software and services.

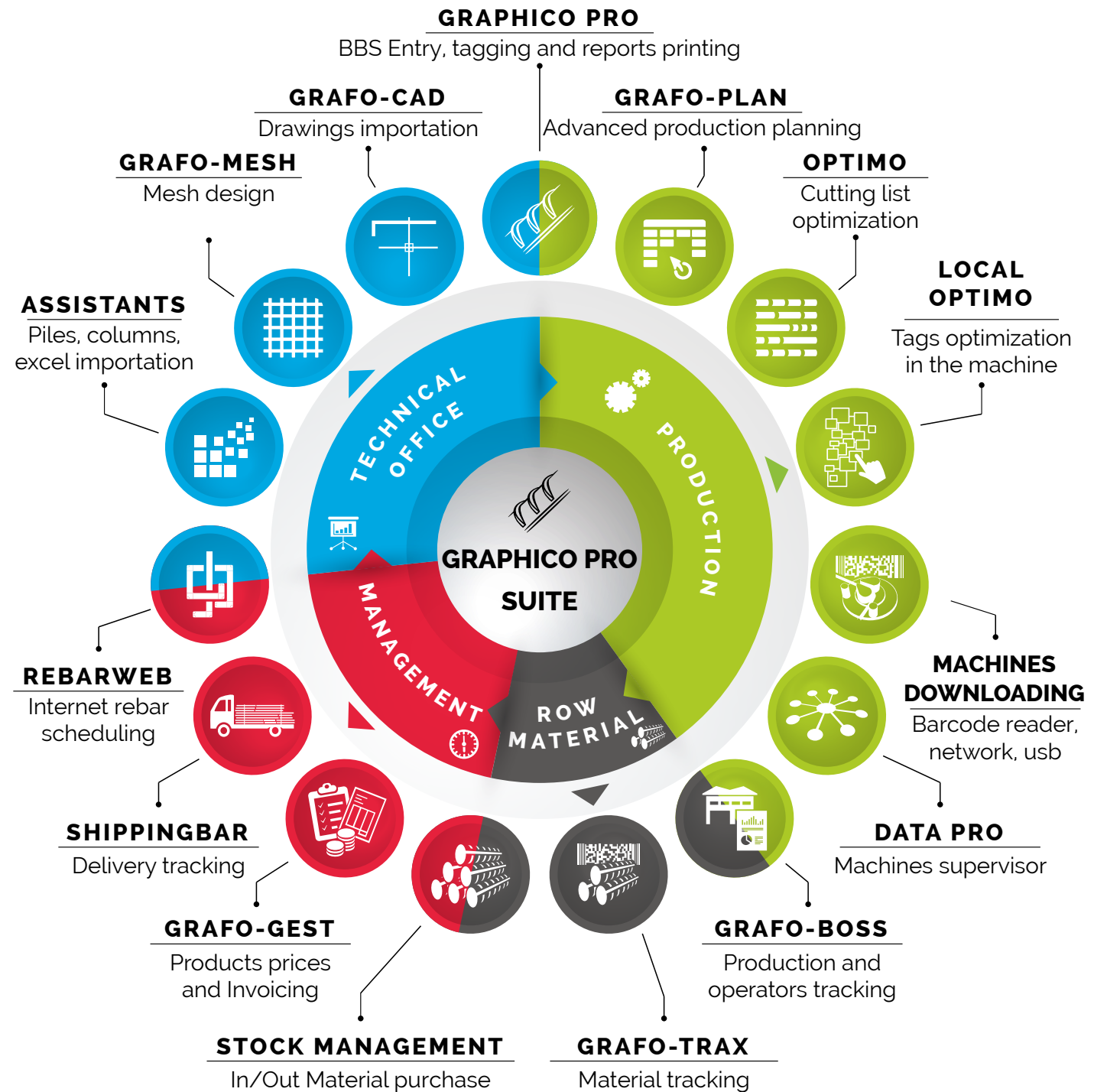
In 2013, Schnell Software also established a new company in the Brazilian market, **Schnell Software Do Brasil**, in order to better serve this growing market.

Schnell Software is present at major exhibitions of machinery and software applications for rebar. We are up to date on **new technologies** and continually develop new options for our programs and new products, improving efficiency and usability. We adapt to universal formats for information transfer. We tailor our products to new operating systems and new market standards.

This orientation to customer satisfaction and the attention to the continuous improvement, allowed in 2011 the company was certified by TUV Rheinland company according to the **ISO 9001:2008** international standards for quality management.



PRODUCTS SUITE





Graphico Pro is an integral management software for rebar shop companies, which is constituted as the **main module** of the Schnell Software products suite.

Graphico Pro is the best software to organize the Engineering Department's projects, to do **rebar detailings** in an easy and structured way and plan the production of the rebar shop.

The program covers all the needs of the technical office, allowing to do all type of rebar detailings, both in **list and assembly**; as well as entering **sundry products**.

The graphical interface, the power and flexibility of the program allow the user more **speed and security in his work**.

The Graphico Pro program, thanks to its design and the powerful base engine of relational data, allows you to **connect several manufacturing centers** forme distance.

**GRAPHICO PRO SUITS
YOUR NEEDS**

Software for building and civil works.

Clients and works management.


Estimating delivery orders management.





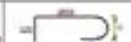
Production orders management.

Automatic production assigning of shop machines.

Factory's parametrization according to type of machine and raw material.

Printing reports and production tags.

	Client: CONSTRUCTORA DEW		Order No: 100	
	C/O: S.O. 100.100.100.100		PO Number: PO-5	
	Address: 100.100.100.100		Total mass: 6633.83	
Art: 07	Site Contact: Mr. Spring Site Phone: 000-000-0000		Delivery Date:	
	Order: 100.100.100.100		Reference No: EUR	
	Place: 100.100.100.100 Floor: 100.100.100.100 Comments:			

Item	General	Qty	Length	Shape	Comments	Weight (kg)
5003						
01	Y40	6	1000			671.12
02	Y40	6	1200			800.34
	Y40	12	1100			1104.43
	Y40	60	2000			1011.76
	Y40	100	1000			1000.80

Figures report by element

WORK IN LIST

1	1	20	10	200	24.68 kg	200 cm
2	2	12	12	450	49.55 kg	465 cm
3	3	100	12	540	506.36 kg	570 cm
4	4	54	26	780	664.65 kg	780 cm

ASSEMBLY ELEMENTS

SUNDRY PRODUCTS

Order: 3106 - VIGA CADENA - ENTREGA 2 - 230 A 44		Weight: 5.143.79 kg	Commercial products: 6.00 kg	Cut. Item: 5.143.79 kg	Production: 4.963.98 kg
Pilot: All the pieces...		Fiber: All the pieces...	Unit: All the pieces...	Machine: All the pieces...	
Order	CALCULO	POSTERIOR	EL...	EL...	EL...
1001	000101 - 000101 - 000101	0	0	0	0
1002	000102 - 000102 - 000102	0	0	0	0
1003	000103 - 000103 - 000103	0	0	0	0
1004	000104 - 000104 - 000104	0	0	0	0
1005	000105 - 000105 - 000105	0	0	0	0
1006	000106 - 000106 - 000106	0	0	0	0
1007	000107 - 000107 - 000107	0	0	0	0
1008	000108 - 000108 - 000108	0	0	0	0
1009	000109 - 000109 - 000109	0	0	0	0
1010	000110 - 000110 - 000110	0	0	0	0
1011	000111 - 000111 - 000111	0	0	0	0
1012	000112 - 000112 - 000112	0	0	0	0
1013	000113 - 000113 - 000113	0	0	0	0
1014	000114 - 000114 - 000114	0	0	0	0
1015	000115 - 000115 - 000115	0	0	0	0
1016	000116 - 000116 - 000116	0	0	0	0
1017	000117 - 000117 - 000117	0	0	0	0
1018	000118 - 000118 - 000118	0	0	0	0
1019	000119 - 000119 - 000119	0	0	0	0
1020	000120 - 000120 - 000120	0	0	0	0

Assignment of machines

Powerful, flexible, visual and easy to use

Reusable material management: Save raw material, time and space!

Save time with bar cutting optimization

Avoid duplications! Control if the labels have been printed

**GRAPHIC AND FUNCTIONAL
REBAR DETAILING**

View in .CAD format the drawing
of your shapes.

Parametrize shapes with formulas.

Unlimited shape base and shared
with all the work team.

Quick and easy creation
of variable figures.

Contemplate piece's real angles for
automated production.

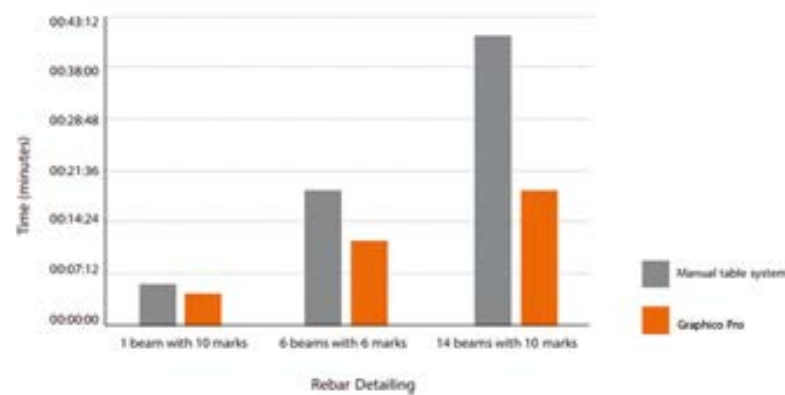
Adapted to all the international
metric systems.

Fast work with keyboard.



Shapes edition

**COMPARATIVE REBAR DETAILING'S TIME
MANUAL SYSTEMS VS GRAPHICO PRO**



With ClicCAD you can **import pieces** from projects designed in AutoCAD © or BricsCAD © with a single click. The program makes the reading of the project in scale, reads column and beams extracting the necessary information for the cutting, thus reducing times and costs.

ClicCAD is a great tool to increase **productivity in technical offices** and for the development of the activity of rebar shops.



Software for importing drawings in .dwg and .dxf format, that transfers, with a click of the mouse, all the piece's information to our system.

DIFFERENT FORMATS READING

Compatible with Autocad© and Bricscad©.

Recommended for beams, columns and slabs drawings.

It reads all the piece's information (name, quantity, diameter and sizes) with a single mouse click.

Extract information from the texts of the figures.

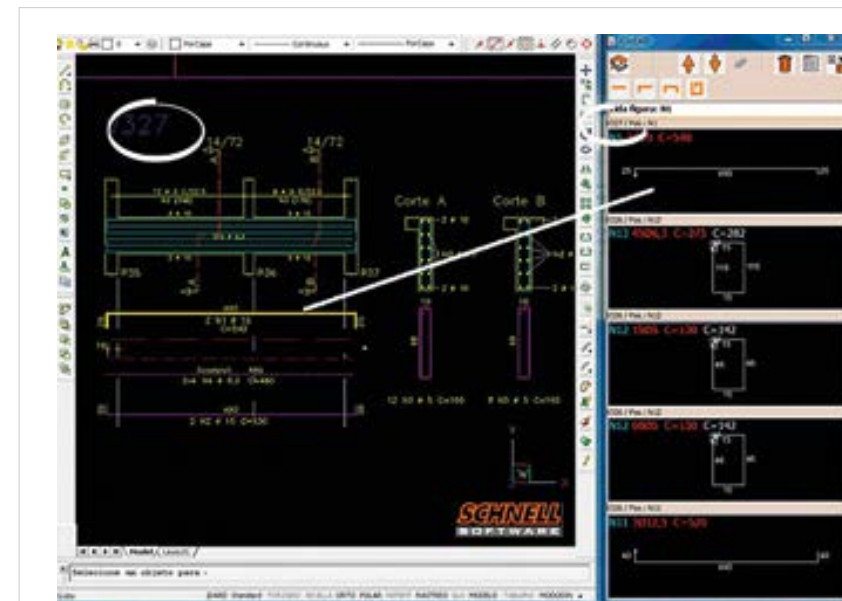
Validate read figures by color change.

Modify the piece's data and / or its geometry manually.

Group equal figures.

Calc the total length of the figure.

Import slabs with positive reinforcements.



✓ **ONLY 3 SECONDS PER PIECE**



Drawing reading

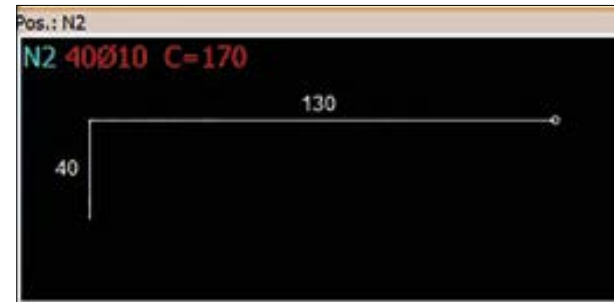
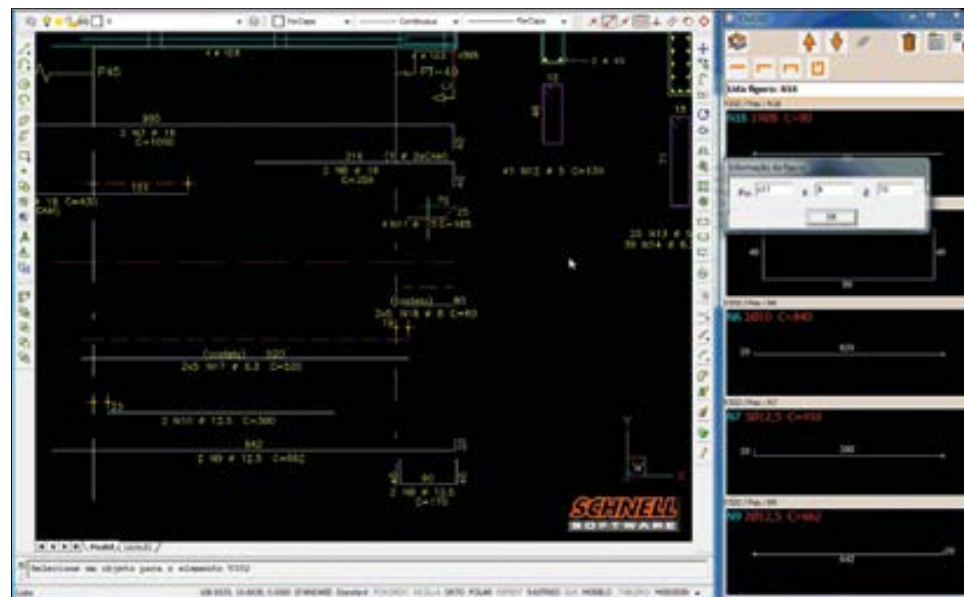


Figure reading



Data modifying

The software interface allows a quick introduction of the mesh data with **cross and long bars** indicating the spacing, diameter, laps and hooks.

Grafo-Mesh is able to produce any kind of mesh whatever complex it is. It allows you to set the spacing in both the same or variable directions, to enter overlaps, hooks and to open rectangular or circular windows.

The graphical representation of the mesh is stored in the program as an element so that you can **print the assembly or the tag**.

The solution gives the possibility to **connect with meshes machines**, sending all the information to the machine only by reading a barcode.



Software for the design of meshes, spread footings, wall footings and other structural elements having longitudinal and transversal wires. It also includes a module for detail the preassembly of meshes with the innovator Schnell VersaLine system.



FLEXIBILITY AND EASY DESIGN

Unidirectional and bidirectional elements.

Mesh design with different diameters and spacing.

Overlaps in both wires: long and cross.

Application of rectangular or circular holes.

Possibility of reinforcement the mesh bends.

3D final design.

Recommended unidirectional elements: preassembled slabs (VersaLine system).

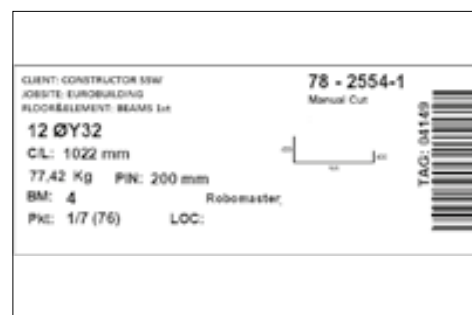
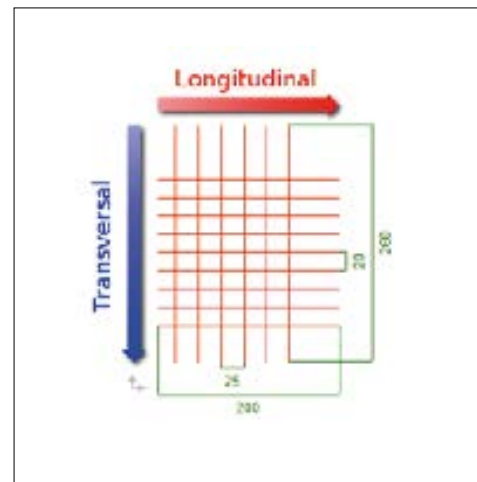
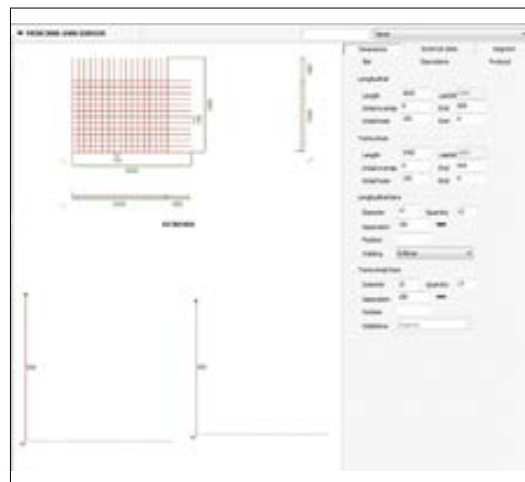
Recommended bidirectional elements: meshes, spread footings, wall footing...

Increase the speed of your rebar detailings

Reduce review times

Take advantage of the drawings of your project, you won't need to draw anything

Improve your delivery times



Synchronization between cut and bend and mesh section

Save time and mistakes by connecting your mesh machine

Group all the mesh information on a single label

Organize production according to your planned deliveries

PILES

Piles insertion software. It allows you to set a pile with spirals and overlaps.

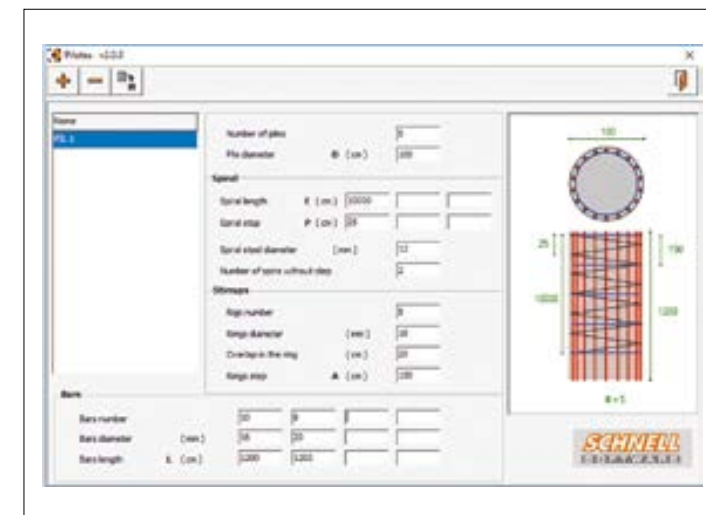
Creation of piles or round columns.

It allows you to enter the overlaps, the spirals pitch and until 4 diameters of longitudinal bars of different calibers.

Reinforced stirrups of the pile.

Exports to the Graphico Pro system the assembly scheme of the pile and calculates the weight.

It includes optimizer for truck loading.



Piles Design

BVBS IMPORT

Import of BVBS files from international structural calculation programs to Graphico Pro.

It imports all the infos of the pieces from a file created in the BVBS international format. The system Graphico Pro, through this module reads the file and uploads the complete list in the program, showing the pieces list for selection and importation.

Import of the data of the pieces, geometric shape included.

Import of the pieces at project level or creation of the orders.

Displaying of the list to import.

Especially recommended for prefabricators who have a structural calculation module, and bigs cut and bend companies with engineering departments that design their own pieces.



Rebar Web is a **bar scheduling service in the cloud**, that offers the most graphic, flexible, powerful and easiest tool in the international market.

It allows total **mobility** when detailing a bar list, accessing to all the projects and schedules from everywhere, using just an internet connection.

Besides it's totally **functional**, the service is designed to get a massive entry of data in a graphic way, so the speed is like working in a local system.

Its **social** dimension is noteworthy. The system gives you the possibility of manage a contacts agenda to communicate through private messages; Work in groups and share projects and schedules makes easy the exchange of BBS for its manufacturing, thanks to the direct contact between users.

Of course, it is part of a system completely **reliable**, that guarantees the confidentiality and protection of the data.

Web application that let your customers prepare BBS online, printing, share and export to Graphico Pro for its production.



SIMPLIFY THE REALIZATION OF YOUR BBS

Visual Tool: Insert pieces in a graphic form and navigate the template.

Custom work: enter figures from predefined models with arithmetic, trigonometric and logical functions, or design your own shape models.

Your schedules on PDF file or on paper: It permits to create bar bending schedules in a PDF file that you can save in your local pc or print it on paper.

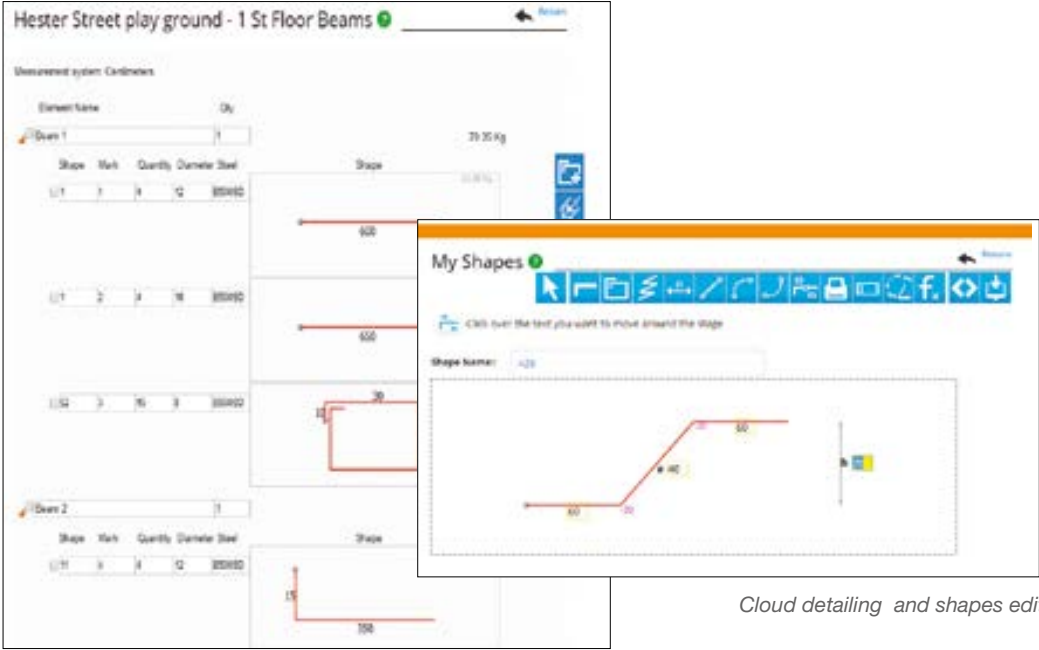
Weights summary by diameter and BBS by position and elements.

✓ CHOOSE THE ACCOUNT THAT BEST SUITS YOUR NEEDS

Freemium	Advanced	Corporate
Sign up for free and start working with the tool!	Destined to professional users looking for a custom tool to make their schedules	Destined to rebar shop companies wishing to receive orders digitally from their customers or sales network
BBS detailing in the web completely free of charge*	Creation of customized shape models	It allows to export the schedules directly to Graphico Pro
Testing service of the Advanced package.	Weights summary	It includes Advanced account features
*Up to a maximum of 5mB	Unlimited space	

And also if you wish ... **Corporate* customized account!** Within the environment of your company's website. Includes your logo, corporate colors, personalized banners, possibility to insert your advertising ...*

*Request a personalized study if you want to offer tracking of the orders to your customers.



Cloud detailing and shapes edition

No installation required!	Adapted to the work's systems of the different international markets	Closer to your customers and/or suppliers	Reduce scheduling and reviewing times of your technical staff
---------------------------	--	---	---



Grafo-Plan is a **visual planning** module that allows you to organize orders and assign them to production dates. The system displays the whole week and allows you to move the orders from one day to another, assign orders to shifts within the day and establish the priority within the shifts.

The module integrates a **work calendar with the production capacity of your factory and its machines**, start and end of each shift, rest time, machine time ...

Grafo-Plan is an essential tool for **estimating the times of manufacturing**.

Generate also essential **reports for the company's manager**: production orders per day-shift and manufacturing priority, summaries of daily load per machine and diameter, weekly estimate ...

Order planning module for rebar steelworks, that allows to work with orders planned and accepted.

PROGRAM YOUR REBAR SHOP

Work shifts management.

Know productivity per shift.

Get productivity by machine.

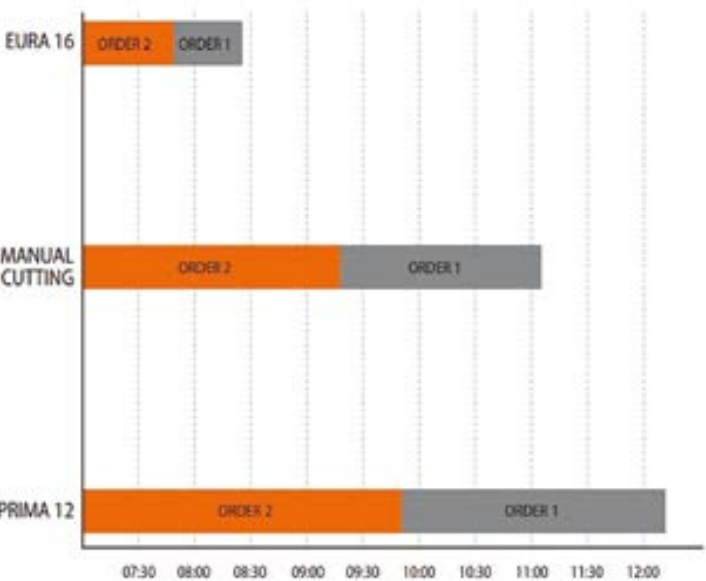
Estimation of manufacturing times by figures.

Know machines loading assigned to a shift.

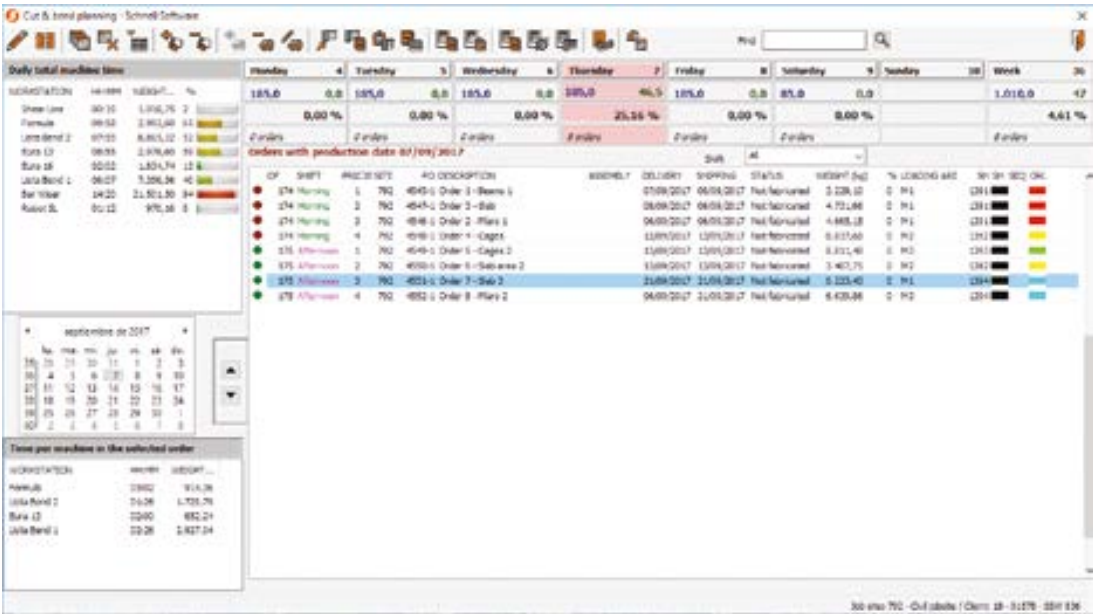
Indicate the manufacturing priority per shift.

Move orders between dates by dragging them with the mouse.

Reschedule orders between shifts.



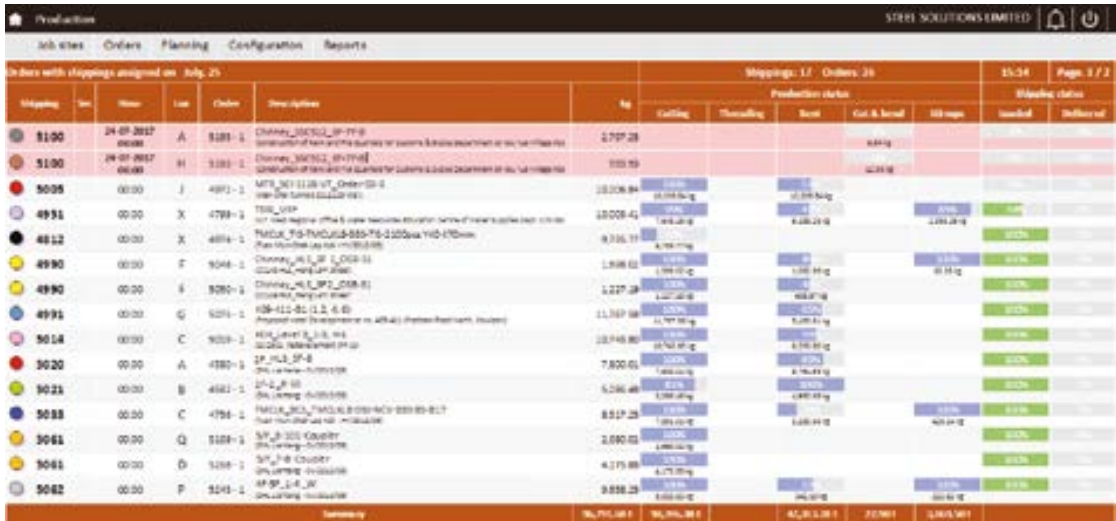
FORGET BLACKBOARDS OR CALCULATION TABLES



Cut and bend planning



A GOOD ORGANIZATION ENSURES MORE PRODUCTIVITY AND DELIVERIES ON TIME.





Optimization management module whose objective is to study the production orders, to obtain the best combination that allows the minimum scrap and highest productivity.

Optimize the cutting list assigned to the cutting machine to **minimize scraps, reduce cutting cycles and increase the machine's productivity**.

Several mathematical algorithms are available depending on the type of work to be done (by diameter, by element, by position). The optimization considers the machine's configuration in order to increase productivity.

Optimo allows to store in a database the amount and length of the off-cuts generated in the optimization in order to reuse it for next orders. The software automatically assigns the bars that can be used using off-cuts by the application of a tolerance.



OPTIMIZE YOUR ORDERS

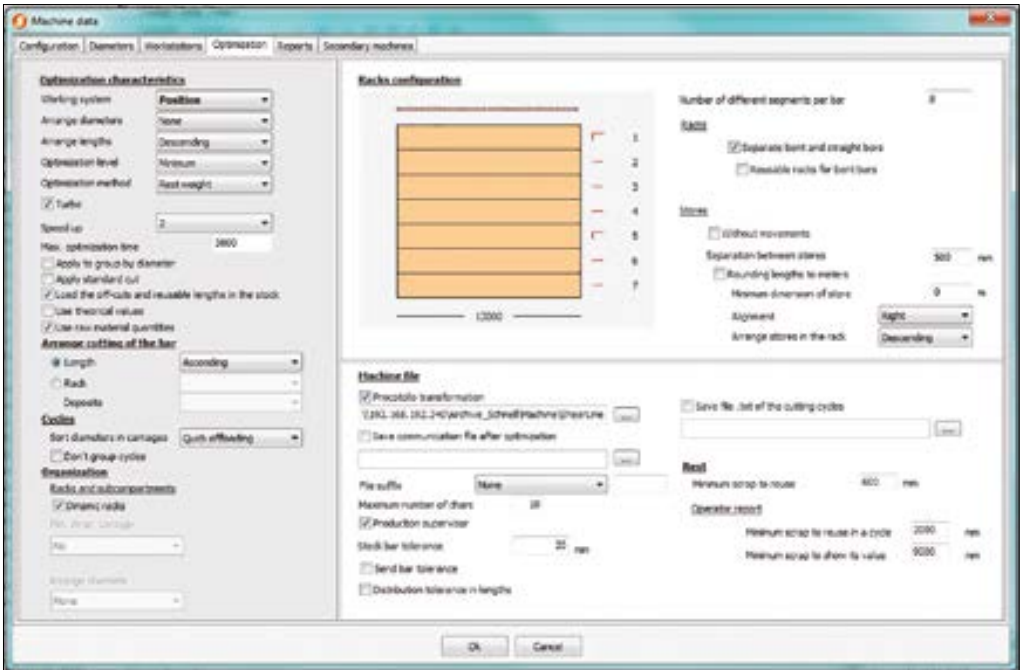
It allows to register different lengths of bars (p.m 12m,14m ...) and make several tests between them. Classify products according to your needs by diameter, position and/or element.

Take in count real stock quantity of bars in order to be more accurate in the cuts.

Combine different customer BBS.

Manage the off-cuts-stock fed by the different cutting optimizations.

Get statistical reports from of your optimizations's efficiency.



Shearline machine configuration for optimization

Increase the efficiency of your reusable warehouse

Help in your provisioning's decisions

Reduce the scraps of your orders

Increase efficiency of your processes and staff

General data

Optimization summary:			kg	%
Total cutted bars			7584,85	100,00
Total scrap smaller than 600.0			127,72	1,68
Total reusable			24,78	0,33
Standar bars total			842,23	11,10
Total cutting			6590,13	86,89
Summary by type of shape:			kg	%
Total:			6590,13	100,00
Straight bars:			2599,79	38,99
Bent bars:			4020,34	61,01

No. of machines cycles: 26
No. of machines loadings: 26

NO OF USED BARS AND OFFCUTS

Ø	#	Length	kg	Scrap-mm	Scrap-kg	%-kg	Reusable	Reusable-kg	%-kg
Y10	144	12.000	1066,19	5.648,00	3,49	0,05	6.428,00	3,97	0,05
Y16	40	12.000	757,91	11.200,00	17,68	0,23	0,00	0,00	0,00
Y25	6	13.700	316,80	0,00	0,00	0,00	5.400,00	20,81	0,27
Y40	38	12.000	4497,99	7.300,00	72,02	0,95	0,00	0,00	0,00
Y40	7	13.700	945,96	3.500,00	34,53	0,46	0,00	0,00	0,00
Total:			7584,85		127,72	1,68		24,78	0,33

Optimization Results



Solution that manages
the tags optimization that
are going to be produced.

Local Optimo is a **optimization software to work on the cutting lines** that allows the best use of cutting lengths minimizing scraps.

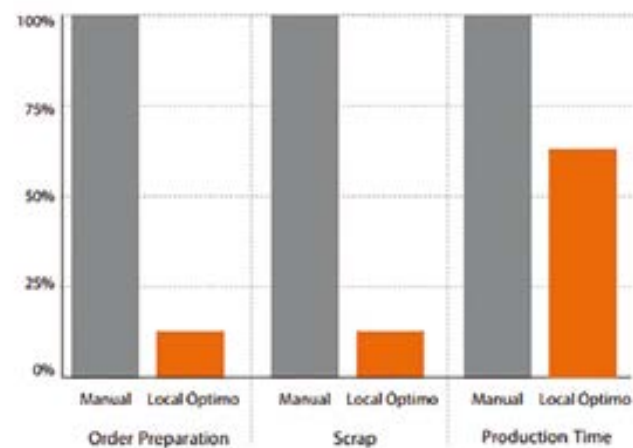
The program works according to the configuration of the machine and the operator needs, allowing total **flexibility** in the production process.

It allows to do **three different optimizations** with different lengths of bars, reporting the operator which is **the best solution**. This means that the operator moves the stock based the cutting needs and the results obtained.

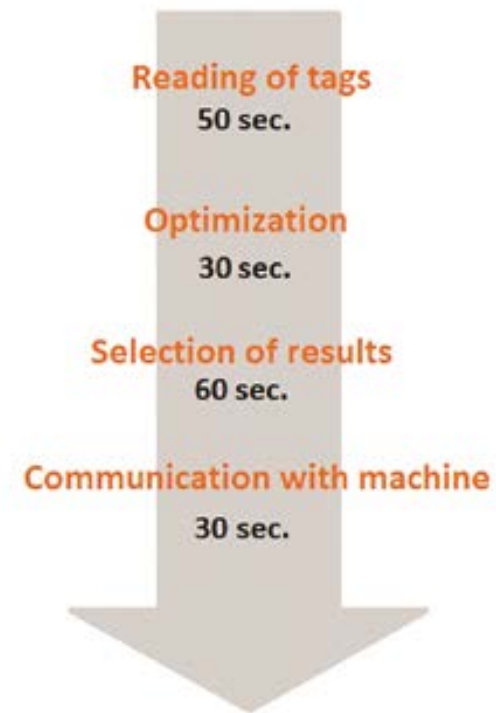
Local Optimo also considers the reusable material allowing a best solution.

Optimized data are sent to the machine automatically avoiding loss of time and data entry errors.

**PRODUCTIVITY AND SAVING OF RAW MATERIAL
IN CUTTING LINES**



30 Posiciones / Etiquetas



**DO YOUR BENEFITS DEPEND ON THE ARITHMETIC
CALCULATION OF THE OPERATOR THAT IS ON THE
CUTTING LINE?**

Schnell Software works on math calculations to improve the performance and productivity of the cutting machines for over 10 years. The successful optimization of our products lies in the application of mathematics to the reality of the customer's production for the completion of the final product. The entire production process of our customers has been studied in all details. The calculation capacity, the different cutting lines layout options and how the final product that must be cut is defined, allow our module to suits to any production system.



Free your staff from
complex mathematical
calculations and
operations

Saves costs in times of
order handling and off-cuts

Increase productivity
and efficiency of your
production

Includes importation
of BBS generated by
third party software



Protocol that automatically sends the information of the rebar pieces to be produced (geometry, diameter and quantity) to the cut and bend machines, assembled and meshes from Schnell and other manufacturers.

Schnell Software, through its different software modules, allows the connection with the machines to **facilitate the insertion of data, increase the factory’s productivity and the quality of the production process.**

The communication is made through a personalized protocol in the case of Schnell machines and with the universal BVBS communication protocol in the other cases. We also develop special protocols for machines that don’t share that defaults.

If we analyze the time an operator takes to insert a piece with all its geometry, according to our experience is of 45 seconds/piece. A transmission system to the machine via barcode minimizes the time to **2 secs/piece**. The saving is significant.por pieza

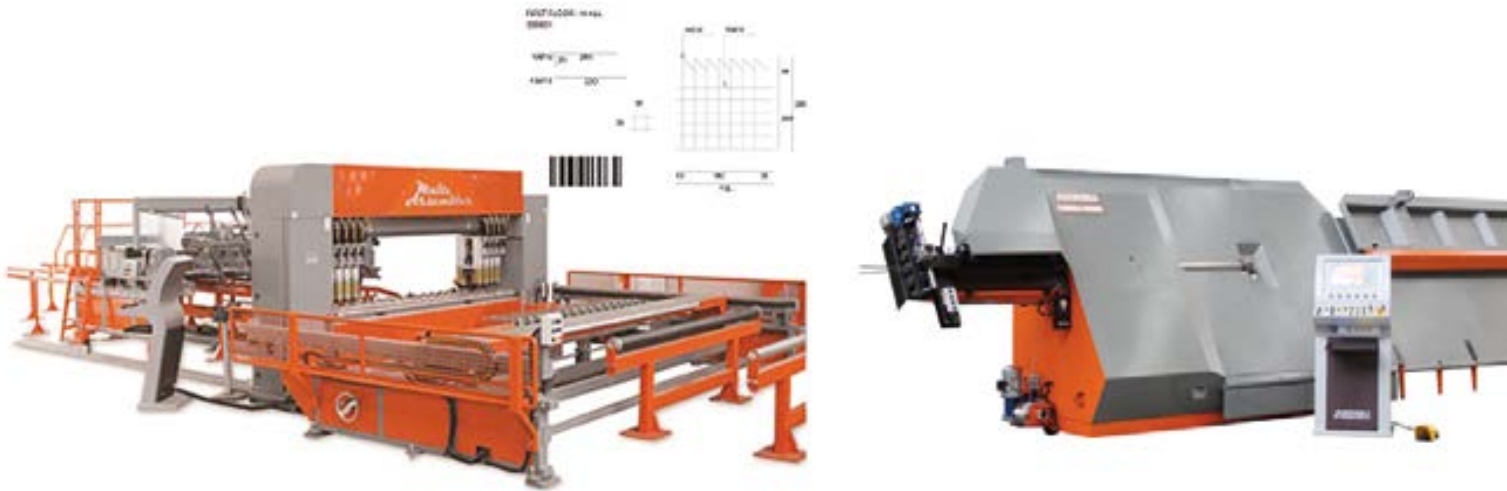


AN ADAPTED CONNECTION

Connection with **PDF 417 or EAN 128 barcode reader** (in this last case required Data Pro Panel): programming is done much more agile and the production time is reduced, for example in assembly machines as the Idea.

Client-server connections through **TCP / IP protocols** on current Schnell machines versions, which allow the operator to do orders and load them into the machine automatically.

USB connection

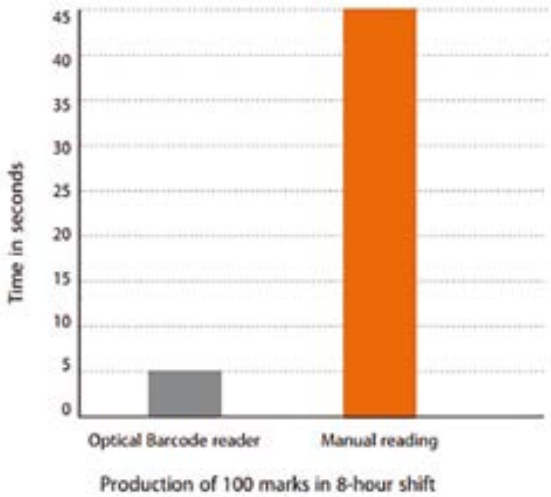


 **INCREASE YOUR PRODUCTIVITY IN MORE THAN 30%**

Time saving of 66 minutes in the example case



COMPARISON OF READING TIMES IN STIRRUP BENDER MACHINES



- Reduce figures digitalization times
- Minimize machine data entry errors and improves the quality of the production process
- Increase the productivity of your rebar shop
- Reduce manufacturing times and thus delivery times, increase your competitiveness!
- Transmission of variable figures to machines include



Solution for Schnell machines:

Data Pro Machine + Data Pro Panel

- Know the your Schnell machines real production.
- Know with high precision the amount of scrap per machine.

Solution for manual machines, assembly workstations and other manufacturers:

Data Pro Panel

- Know the expected production of your workstations.
- Calculate the predicted scrap.

The system Data Pro record the activity of the rebar shop and send to the central system the production data of each machine or workstation.



Data Pro Panel Solution in Rebar Shop

REAL TIME PRODUCTION

Graphical interface.

Production by workstation or machine broken down by diameters, per day or shift.

Traceability record.

Incident Record.

Consumption of raw material per package or kg.

Export information to Excel spreadsheet.

Machine communication status.

Collect production information, traceability and consumption of raw material for that Grafo-Boss, Grafo-Trax and G-Stock receive it automatically.

Ask for information about the kit Data Pro that includes Touchscreen PC and optical barcode reader for data transmission.

Ensures your processes control with the reliability and precision of the Data Pro system data

We adapt to all machinery manufacturers!



Grafo-Boss software allows, with minimal user action, to **manage and monitor the rebar shop production** in real time.

It's based on a structure of computer network with Internet technology TCP-IP, integrated with **touch screen** terminals that allow sending the Information from the factory to a data manager to monitor production.

It's an open system integrated with Graphico Pro in a transparent way and adapting to all its functions.

It can manage every production configuration in the rebar shop. It's compatible with any kind of production system: **by element, by position, assembled elements and civil works.**

Integral software that allows the control of production, tracking orders and time management, with real-time monitoring.

GET THE INFORMATION YOU NEED

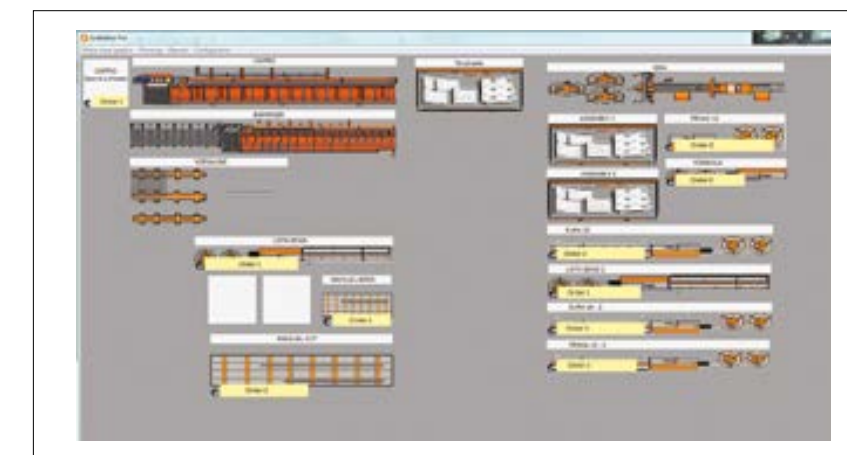
Planning of production orders according to installed capacity of the rebar shop and provided deliveries.

Rebar shop monitoring: know the rebar shop productivity and by workstation.

Operators management: shifts, productivity indexes, incentives according to productivity ...

Incident management: stop types, statistics ...

Productivity reports between dates, daily, monthly and yearly.

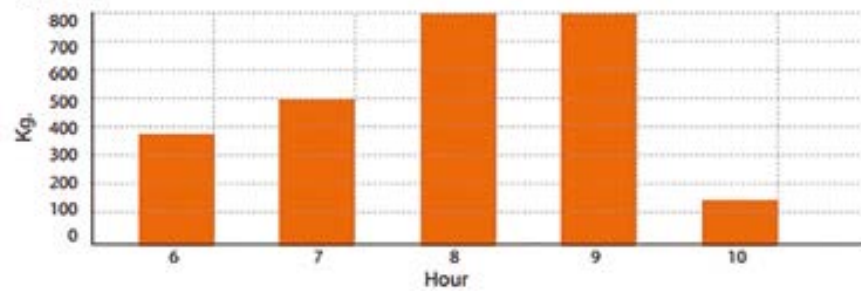


Rebar Shop situation in real time

PRODUCTION BY SHIFT AND WORKSTATION

Daily production per hour
Workstation: Eura 13
Period: 01/06/2015

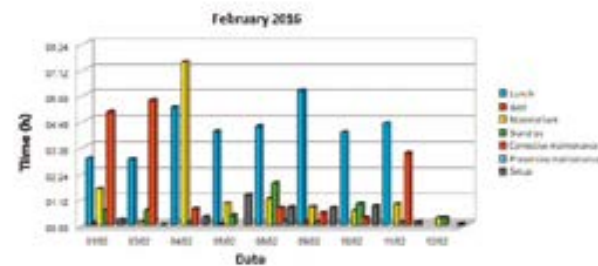
First shift



MONTHLY PRODUCTION BY WORKSTATION

	Acad	Banister 22	Dina 16	Eura 13	Eura 16	Poma 12	Poma 12 HS (t)	Total
JANUARY	9 541	48 915	1 688	64 554	37 758	27 995	20 758	211 148
FEBRUARY	12 889	148 405	16 481	75 492	79 589	28 895	23 333	349 384
MARCH	18 329	95 207	61	118 854	129 834	45 531	31 599	437 335
APRIL	11 834	95 158	7 262	100 818	116 384	41 933	40 435	483 851
MAY	14 418	95 901	48 162	92 891	136 797	24 935	43 534	427 635
Total	64 215	444 784	65 574	452 742	496 342	169 288	159 234	1 849 174

DAILY STOPS OF MACHINES BY TYPE



Estimate production times of each piece according to its geometry and machine for which it will be manufactured

Estimates production times both cutting and bending, as well as steel assembly

Know the expected dates of order ending

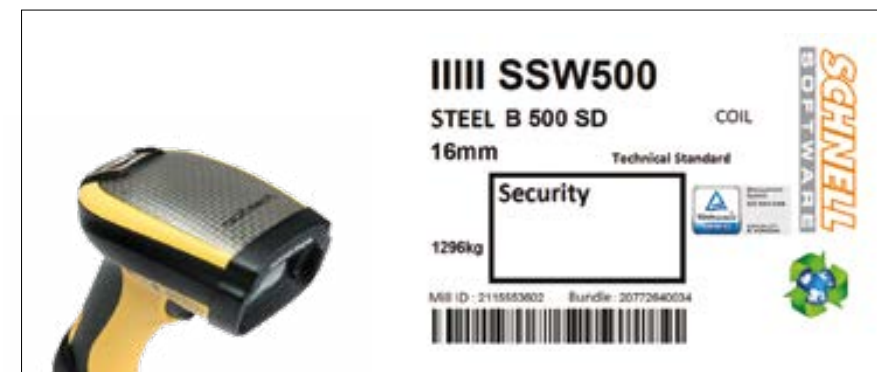
Module that allows the **tracking of material for quality management** and real time reception of the steel used in the different machines.

Grafo-Trax manages the **traceability of the cut and bend products and sundry products** of the rebar shop. Once the goods receipt has been registered, it's possible to add the quality **certificates** of the steel products to the system to register them.

The system allows after the tracking to print the **tracking report** by order or by project, adding its certificates in electronic PDF format or obtain a full CD of the project.



Software that allows to track the material of the production orders in the factory. It can be applied to cut and bend products and sundry products in the stock.



TRACKING = QUALITY

Automatic scan and store of the certificates.


Automatic assignation of heats to the orders through the system Data Pro.

Tracking by project according to levels of detail of information (floor, group, elements and/or positions).

Tracking by order.

Tracking reports with certificates copy.

Supplier barcode decoding.

	Entry note								
	No. delivery note		Material SSI		Date		Page		
	2		213		18-04-2017		1		
	Origin				Destination				
	Stock: 1 - MIB 1				Stock: 2 - Main warehouse				
Quantity No. producer roll	Product	ST	Material	Producer	Weight/Number	Total (kg)	Qty (MIB)	Qty (MIB)	Weight (kg)
1 275	175 132 - 10 Deformed Bar	132	508		297,81	796	0	1	796
1 275	175 132 - 10 Deformed Bar	132	508		1,888,79	1,491	0	1	1,491
1 275	175 132 - 10 Deformed Bar	132	508		1,794,51	1,409	0	1	1,409
48 275	175 132 - 10 Deformed Bar	132	508		2,863,29	95,451	0	48	95,451
Total Entry note (kg)						101,659 kg			
Comments									

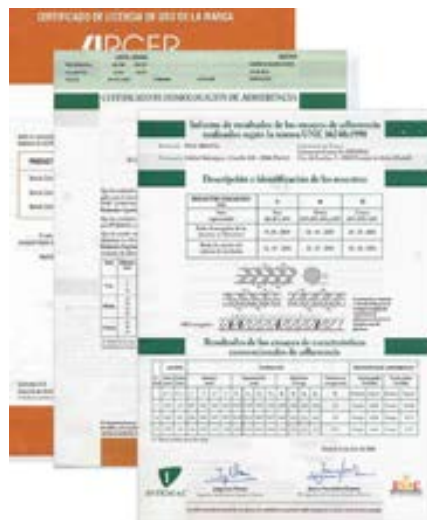


Avoid re-labeling all
your raw material

Optimization of
resources in your
production and
quality departments

Reliability of the
data obtained
as opposed to a
manual system

Add sales
arguments to your
services



Software of **automatic reading of stock** at the
reception of material. After unloading the packages,
manufacturer's tags are read and loaded into the data
capture device.

Once received, It is sent from the device to the central
system, making the input of material and issuing a
document of entry receipt.

In addition, if you wish to relabelling the system allows
you to print new tags with barcode supported.



Module that manages the
orders of raw materials, goods,
incoming and exit of the stock
in the production process.

CONTROLLED STOCK AT ALL TIMES

Automatic entry of materials
with data capture device.*

Consumption control per
package or kg.

Multicenter management between
production centers.

Available Stock reports and
between dates (by diameter,
presentation and type of steel).

* With compatible barcodes



Save raw material
reception times

Know the kg of raw
material consumed in
your orders

Synchronize with Grafo
Gest software and
improve your purchases
management.

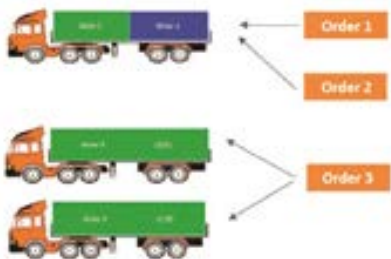


ShippingBar is a system for the **shipment control** that allows to manage the load in an easy way and safe, through a **bar code tag**.

At the time of loading, the tags of each order are registered with a barcode reader. In this way, the operator can control the load and verify if it is complete, avoiding errors of loading and forgetting of material to be delivered.

The system allows to **include several different orders in one load**, for different projects and/or customers, and even to **divide orders** by limited space in the truck or by other customer needs, generating a report of pending for future load.

The theoretical weight and **production weight** of each order is registered and also allows to include **scale weight**.



SCHNELL SOFTWARE

Shipping: 1311

Invoice date: 07/09/2017

H. date: 12/31/06

Page: 1/1

PENDING

3441 Order 1 - Bounte 2299.10 Port City

4541 Order 2 - Bounte 4865.91 Port City

4547 Order 3 - Slaters 4775.06 Port City

4541 Order 4 - Bounte 4865.91 Port City

4547 Order 5 - Slaters 4775.06 Port City

4541 Order 6 - Bounte 4865.91 Port City

4547 Order 7 - Slaters 4775.06 Port City

4541 Order 8 - Bounte 4865.91 Port City

4547 Order 9 - Slaters 4775.06 Port City

4541 Order 10 - Bounte 4865.91 Port City

4547 Order 11 - Slaters 4775.06 Port City

4541 Order 12 - Bounte 4865.91 Port City

4547 Order 13 - Slaters 4775.06 Port City

4541 Order 14 - Bounte 4865.91 Port City

4547 Order 15 - Slaters 4775.06 Port City

4541 Order 16 - Bounte 4865.91 Port City

4547 Order 17 - Slaters 4775.06 Port City

4541 Order 18 - Bounte 4865.91 Port City

4547 Order 19 - Slaters 4775.06 Port City

4541 Order 20 - Bounte 4865.91 Port City

4547 Order 21 - Slaters 4775.06 Port City

4541 Order 22 - Bounte 4865.91 Port City

4547 Order 23 - Slaters 4775.06 Port City

4541 Order 24 - Bounte 4865.91 Port City

4547 Order 25 - Slaters 4775.06 Port City

4541 Order 26 - Bounte 4865.91 Port City

4547 Order 27 - Slaters 4775.06 Port City

4541 Order 28 - Bounte 4865.91 Port City

4547 Order 29 - Slaters 4775.06 Port City

4541 Order 30 - Bounte 4865.91 Port City

4547 Order 31 - Slaters 4775.06 Port City

4541 Order 32 - Bounte 4865.91 Port City

4547 Order 33 - Slaters 4775.06 Port City

4541 Order 34 - Bounte 4865.91 Port City

4547 Order 35 - Slaters 4775.06 Port City

4541 Order 36 - Bounte 4865.91 Port City

4547 Order 37 - Slaters 4775.06 Port City

Invoice	Product	Q	U	Unit Price	Total
4541	OBSEA CML 718	1	1	1225.11	1225.11

4541 Order 38 - Bounte 4865.91 Port City

4547 Order 39 - Slaters 4775.06 Port City

4541 Order 40 - Bounte 4865.91 Port City

4547 Order 41 - Slaters 4775.06 Port City

4541 Order 42 - Bounte 4865.91 Port City

4547 Order 43 - Slaters 4775.06 Port City

4541 Order 44 - Bounte 4865.91 Port City

4547 Order 45 - Slaters 4775.06 Port City

4541 Order 46 - Bounte 4865.91 Port City

4547 Order 47 - Slaters 4775.06 Port City

4541 Order 48 - Bounte 4865.91 Port City

4547 Order 49 - Slaters 4775.06 Port City

4541 Order 50 - Bounte 4865.91 Port City

4547 Order 51 - Slaters 4775.06 Port City

4541 Order 52 - Bounte 4865.91 Port City

4547 Order 53 - Slaters 4775.06 Port City



Orders report

Printed: 04-08-2017 10:52

Page: 5/1

Job site: EUROBUILDING

Material delivery date: Between 09/02/2017 & 10/02/2017

CODE	DESCRIPTION	D. ORDER	JOB SITE	CLIENT	request price	product price
2318	Beams 1st Floor	19/01/2017	Borsdel-liding	Constructor SSW	4.154,81	4.507,52
2319	Columns 1st and 2nd floor	19/01/2017	Borsdel-liding	Constructor SSW	6.744,71	6.705,56
2381	Slab Area A	20/01/2017	Borsdel-liding	Constructor SSW	4.154,81	4.507,52
2382	Slab Area B	20/01/2017	Borsdel-liding	Constructor SSW	4.154,81	4.507,52
2415	Slab Area C	20/01/2017	Borsdel-liding	Constructor SSW	11.890,65	11.797,21
2416	Special Mesh	25/01/2017	Borsdel-liding	Constructor SSW	9.697,37	9.653,40
2537	Special Mesh 2	04/02/2017	Borsdel-liding	Constructor SSW	11.524,90	11.524,90
2544	Standard Mesh	04/02/2017	Borsdel-liding	Constructor SSW	4.822,98	4.852,90
2538	Slab Area D	04/02/2017	Borsdel-liding	Constructor SSW	2.886,49	2.805,34
2534	13m 124 bundles	04/02/2017	Borsdel-liding	Constructor SSW	11.872,22	11.866,46
2536	13m 120 bundles	04/02/2017	Borsdel-liding	Constructor SSW	19.962,48	19.983,88
2587	Couplers and Threaded bars	05/03/2017	Borsdel-liding	Constructor SSW	16.512,33	16.525,33
					80.837,54	82.833,43

GENERATE ORDER TRUCK ROUTES

Registration and control of the rebar shop output of finished products (cutting and bending, assembly and goods).

Registration of trucks and transport personnel for transport documents

Shipment control with data capture device.

Live information of the orders shipment status.

Registration of transport routes per project and periods knowing at all times what was delivered to the customer.

Shipping control reports per project and order.

Connection with Grafo-Gest to generate the delivery note or to third party management systems.

Eliminates shipments
orders mistakes avoiding
unplanned costs

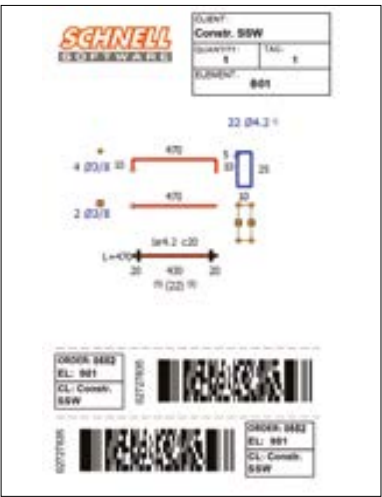
Improve the quality of your
processes and increase your
commercial capacity

Reduces order
preparation times

Individual positions load



Assembled elements load



Sundry products load





Integrated management software that allows to build a homogeneous information system with Graphico Pro software.

Grafo Gest is an integrated and **multicenter** departmental management software, with a **web interface** and connected to the production management of **Graphico Pro**, that allows to centralize data from the different departments:

- **Purchasing:** orders, receptions of raw materials and Sundry products, valued stock entries, supplier invoice tracking, payment management ...
- **Sales:** budgets management, customer orders, expected projects ...
- **Shipping:** delivery notes, daily expected loads ...
- **Administration:** invoicing, collections, risks ...

It also includes the option of automatic dump of orders and delivery notes, and **parameterized reports models** adapted to the needs of the client.

PURCHASING MANAGEMENT

Supplier management.

Raw material orders.

Orders for sundry products and steel products.

Management of goods receipt and invoices received.

SALES MANAGEMENT

Follow-up of new projects.

Production orders management and steel supply.

Management of sundry products and services orders.

Products and dynamic prices management.

ID	Description	Quantity	Price	Taxes	Discount	Rate	Evaluation
20102	20102 4/10x10x10	1.000	1.000	0.00%	0.00%	0.00%	1.000
20103	20103 4/10x10x10	1.000	1.000	0.00%	0.00%	0.00%	1.000
20104	20104 4/10x10x10	1.000	1.000	0.00%	0.00%	0.00%	1.000
20105	20105 4/10x10x10	1.000	1.000	0.00%	0.00%	0.00%	1.000
20106	20106 4/10x10x10	1.000	1.000	0.00%	0.00%	0.00%	1.000
20107	20107 4/10x10x10	1.000	1.000	0.00%	0.00%	0.00%	1.000
20108	20108 4/10x10x10	1.000	1.000	0.00%	0.00%	0.00%	1.000
20109	20109 4/10x10x10	1.000	1.000	0.00%	0.00%	0.00%	1.000
20110	20110 4/10x10x10	1.000	1.000	0.00%	0.00%	0.00%	1.000

Sales management - Budgets

Product	Stock	Weight	Date
20102	1.000	1.000	2017-08-21
20103	1.000	1.000	2017-08-21
20104	1.000	1.000	2017-08-21
20105	1.000	1.000	2017-08-21
20106	1.000	1.000	2017-08-21
20107	1.000	1.000	2017-08-21
20108	1.000	1.000	2017-08-21
20109	1.000	1.000	2017-08-21
20110	1.000	1.000	2017-08-21

Stock between dates

Project	Location	Start date	End date	Weight	Status
20102	20102	2017-08-21	2017-08-21	1.000	1.000
20103	20103	2017-08-21	2017-08-21	1.000	1.000
20104	20104	2017-08-21	2017-08-21	1.000	1.000
20105	20105	2017-08-21	2017-08-21	1.000	1.000
20106	20106	2017-08-21	2017-08-21	1.000	1.000
20107	20107	2017-08-21	2017-08-21	1.000	1.000
20108	20108	2017-08-21	2017-08-21	1.000	1.000
20109	20109	2017-08-21	2017-08-21	1.000	1.000
20110	20110	2017-08-21	2017-08-21	1.000	1.000

Projects expected

ID	Date	Delivery note	Origin	Supplier	Products	Quantity	Scale weight	Amount	Ending
20102	2017-08-21	20102	20102	20102	20102	1.000	1.000	1.000	1.000
20103	2017-08-21	20103	20103	20103	20103	1.000	1.000	1.000	1.000
20104	2017-08-21	20104	20104	20104	20104	1.000	1.000	1.000	1.000
20105	2017-08-21	20105	20105	20105	20105	1.000	1.000	1.000	1.000
20106	2017-08-21	20106	20106	20106	20106	1.000	1.000	1.000	1.000
20107	2017-08-21	20107	20107	20107	20107	1.000	1.000	1.000	1.000
20108	2017-08-21	20108	20108	20108	20108	1.000	1.000	1.000	1.000
20109	2017-08-21	20109	20109	20109	20109	1.000	1.000	1.000	1.000
20110	2017-08-21	20110	20110	20110	20110	1.000	1.000	1.000	1.000

Purchasing management - Goods receipt

Access from anywhere and device!

Your production costs now more controlled

Improve tracking of your sales operations

Integration with third parties systems

We offer the solution that best suits your needs:

1. Communication through generation of exchange files containing the information required by the ERP system (weight per diameter, sales order ...).

2. Integration through web services with the ERP system (master of clients and projects, bidirectional update of tables ...).

This eliminates the complex links between the systems of the different business areas. We help you to optimize your business processes, facilitating the access to training and an efficient management that allows the proper decision-making and reduction of total operating costs.

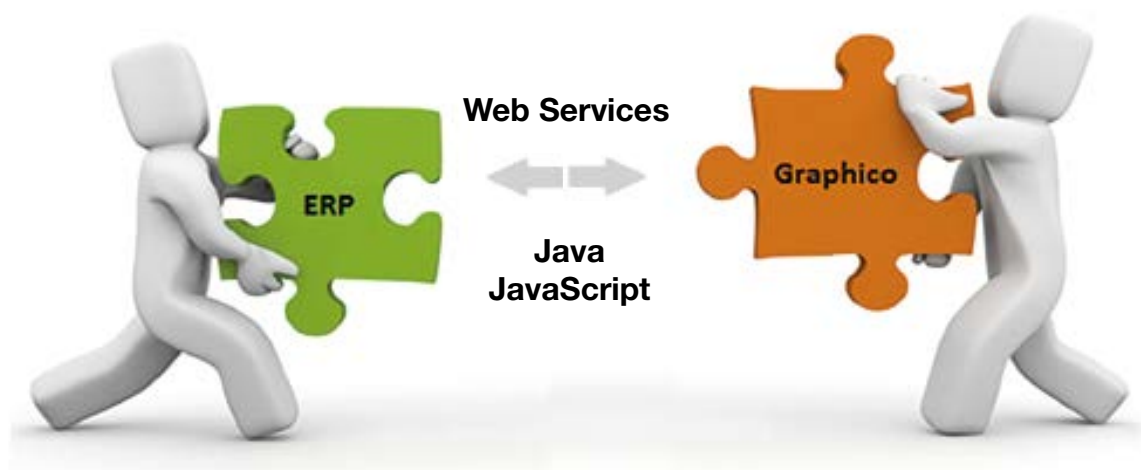


Schnell Software gives the possibility to communicate or integrate its software with other international ERP software.

A unique software to manage your business

Avoid duplication of data entry

Consolidate your business information



Due to continuous product development, photos are not binding.

Schnell
REINFORCEMENT PROCESSING SOLUTIONS

Schnell spa

Via Borghetto, 2 - Zona Ind. San Liberio
61036 Colli al Metauro (PU) - Italia

Tel. +39 0721 878711
Fax +39 0721 8787330

www.schnell.it . www.schnellsoftware.com
marketing@schnell.it

Download the **free SchnellAPP!**
Schnell Machine's Catalogue
is now available on the App Store
and Google Play!



<https://goo.gl/nU9b8w>



<https://goo.gl/euzBPr>

